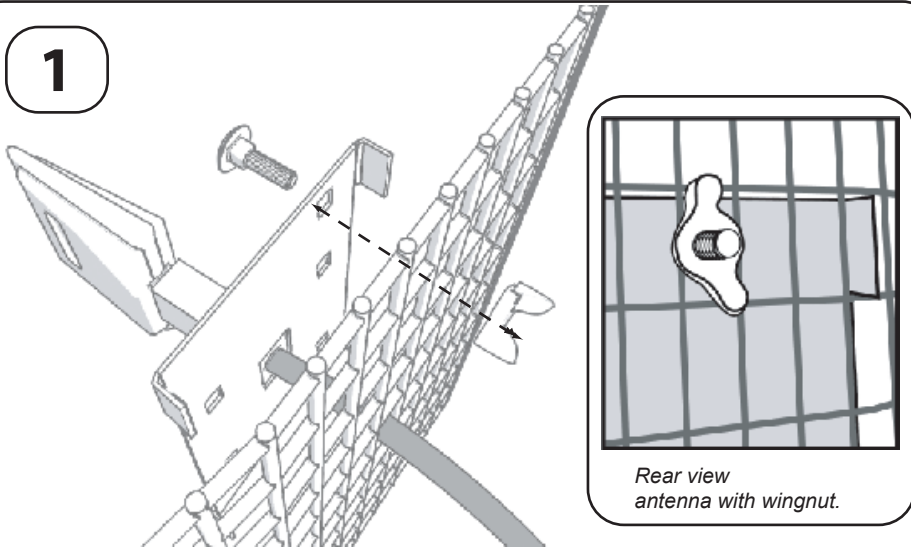


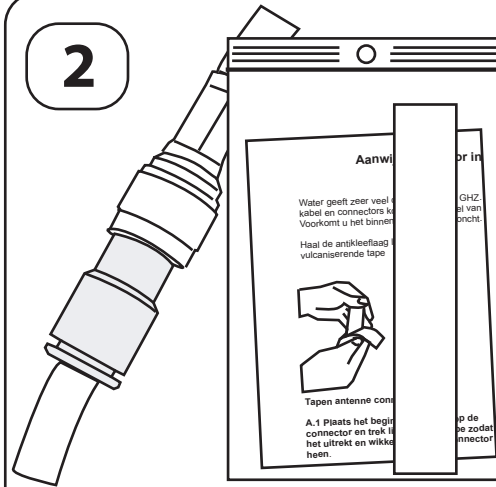
1



Rear view antenna with wingnut.

Place the grid and dipole together. Lock these with the dipole and wingnut.

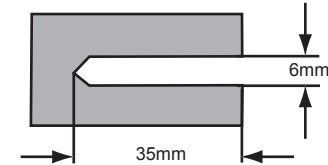
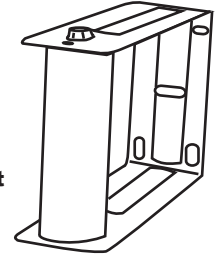
2



Connect the extension cable to the Antenna. Protect the connection with the vulcanizing tape.

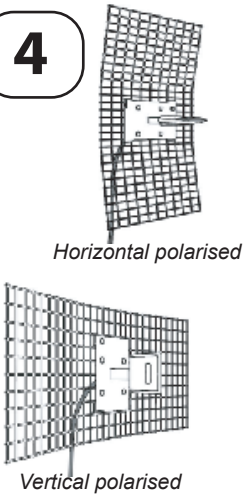
3

Install the wall mount with the supplied hardware.



The drillhole must at least be 35 mm deep with a diameter of 6 mm.

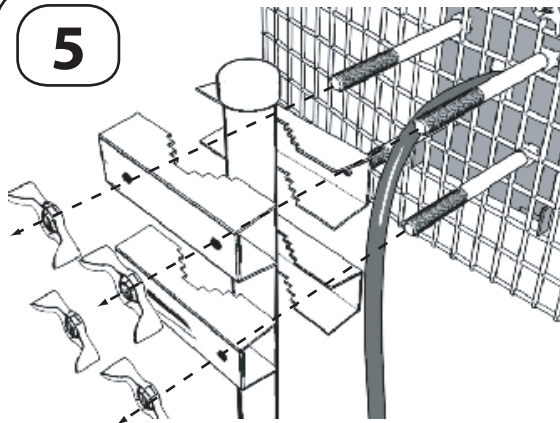
4



Horizontal polarised

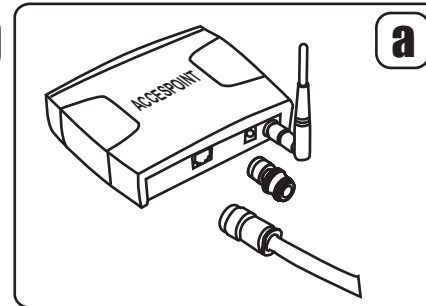
Vertical polarised

5

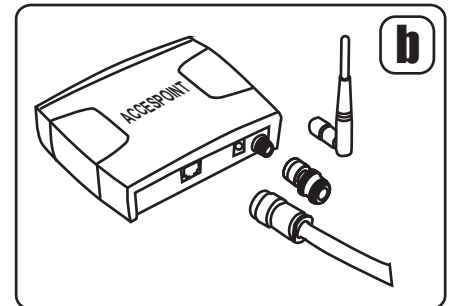


Secure the antenna to the wall mount or pole with the supplied pole brackets.

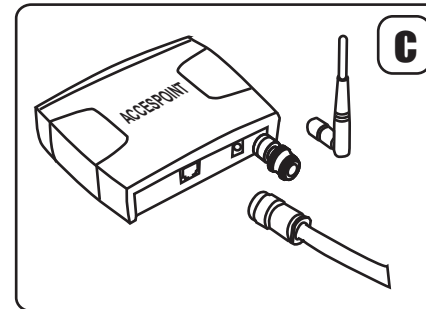
6



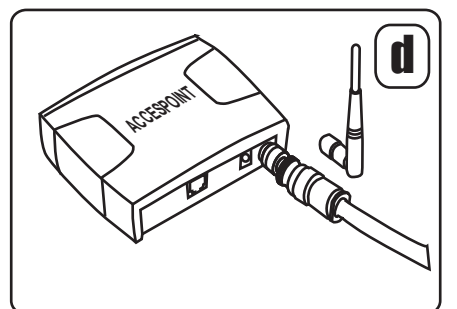
Chose the correct cable adapter



Remove old antenna from accespoint



Connect the antenna adaptor



Connect antenna cable to adaptor



QUICK START