



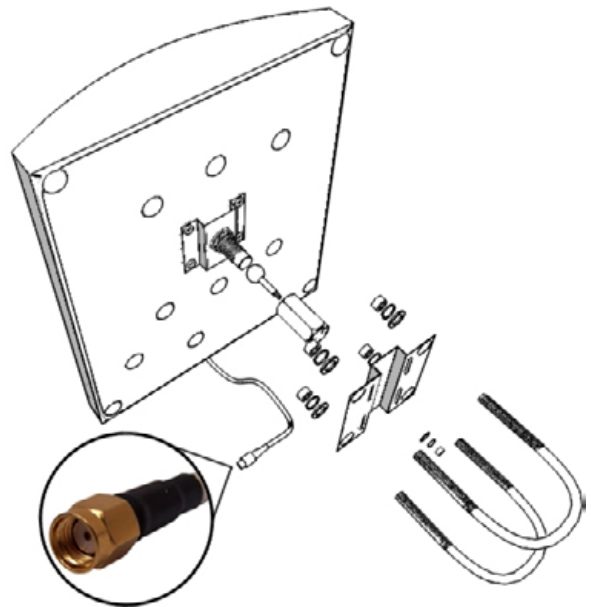
PA10W 10dBi mini sector antenna



- Complete with 2 meters of antenna cable
- RVS pole mounting material included
- Reversed polarity SMA connector
- High quality materials used
- Easy wall mount possible
- Gain 10 dBi
- 110 deg beam width
- Completely weather proof
- Tested by HP network analyser
- Easy aligning possible by special bracket

Specifications

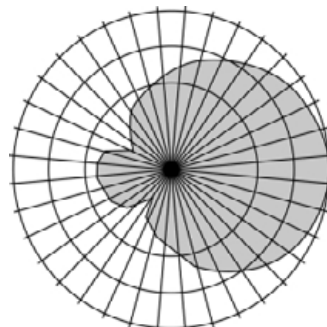
Frequency Range	2400 – 2485 MHz
Gain	10 dBi
VSWR	1,5:1
Impedance	50 OHM
Front to back ratio	20 dB
Power rating	100 W
Polarization	Vertical
Material	UV resistant plastic, RVS, Chrome
Max. wind speed	241 km/h
Weight	1,2 kg
Dimension (mm)	(220 x 190 x 45)



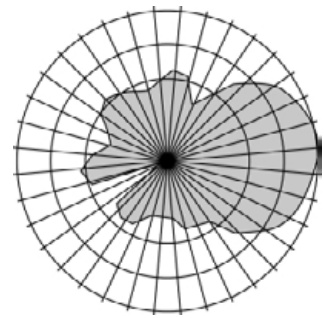
Gold plated reversed polarity SMA



Full rotating bracket antenna in any possible angle



Azimuth radiation pattern



Elevation radiation pattern

