



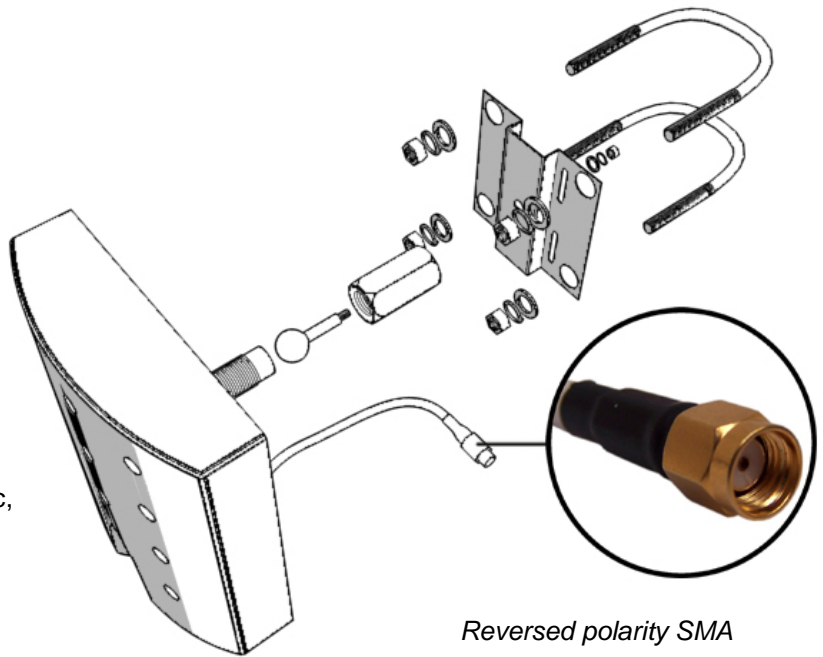
# PA8W 8dBi Panel antenna



- Complete with 2 meters of antenna cable
- RVS pole mounting material included
- Reversed polarity SMA connector
- High quality materials used
- Easy wall mount possible
- Extremely small size
- Gain 8 dBi
- Attractive housing type
- Completely weather proof
- Horizontal or vertical polarization
- Easy aligning possible by special bracket

## Specifications

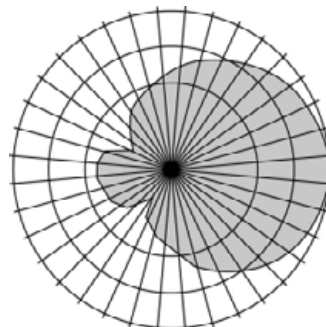
Frequency Range	2400 – 2485 MHz
Gain	8 dBi
VSWR	1,4:1
Impedance	50 OHM
Front to back ratio	20 dB
Power rating	100 W
Polarization	Linear, Hor/Vert
Material	UV resistant plastic, RVS, Chrome
Max. wind speed	215 km/h
Weight	0,5 kg
Dimension (mm)	(120 x 90 x 20)



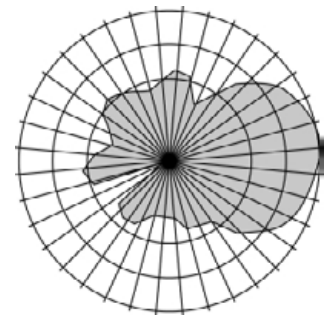
*Reversed polarity SMA*



*Full rotating bracket antenna in any possible angle*



*Azimuth radiation pattern*



*Elevation radiation pattern*

