



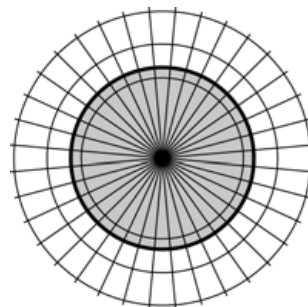
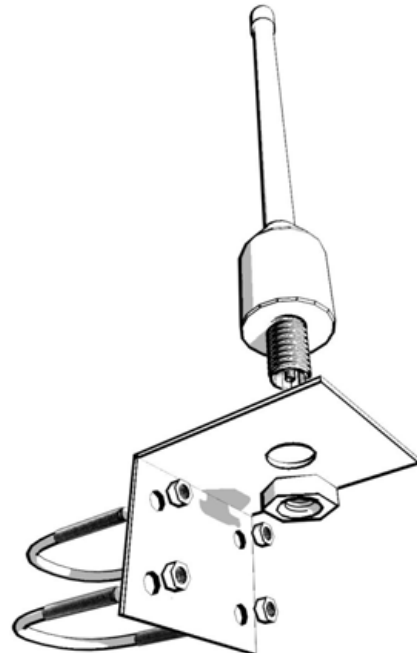
# Fiberglass Omni antenna Gain 5dBi



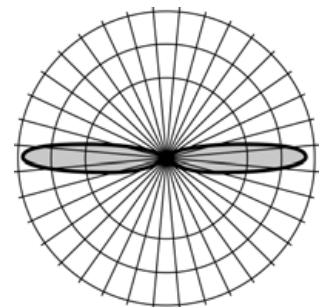
Omni directional Indoor and outdoor antenna  
Strong pole mounting material included  
Mounted on N Female connector  
Fiberglass housing  
5dBi Antenna gain  
Vertical polarization  
Attractive housing type  
Type N Female connector  
Low profile blends easy with any environment

## Specifications

Frequency Range	2400 - 2483 MHz
Gain	5 dBi
VSWR	1.5:1
Impedance	50 OHM
Input Power	100W
Operating Temperature	-10 +70 Deg C
Azimuth beam width	360 degree
Elevation beam width	28 Degree
Mounting Hole Size	16 mm
Weight	0,2 Kg
Dimension (Dia. x Length)	(35mm x 300mm)



*Azimuth radiation pattern*



*Elevation radiation pattern*

