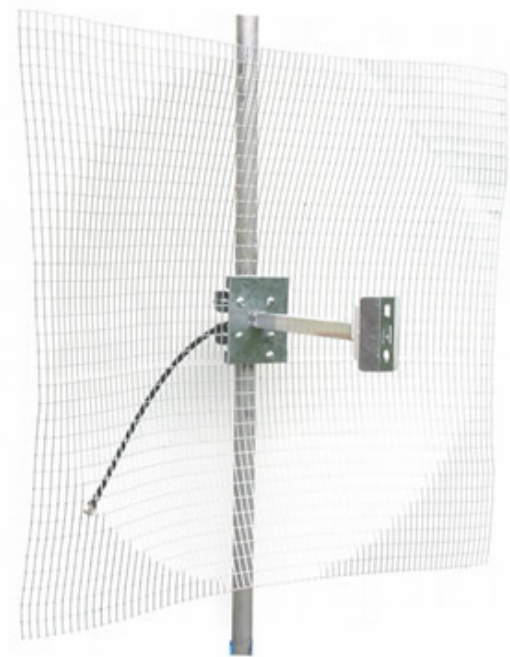




SD24 mesh antenna 22,5 dBi gain



Light weight because of the use of 2 mm mesh

Strong antenna for 2.4 to 2.5 GHz

High quality materials used

Type N-male connector

Individually tested

Gain 22,5 dBi

Completely weather proof

Dipole sealed for long lifespan

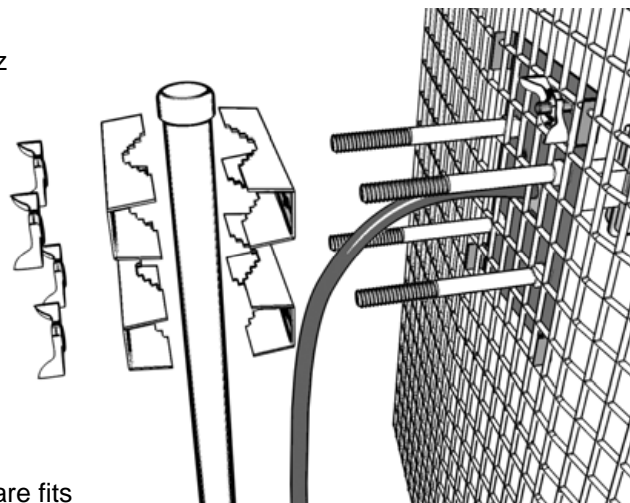
Horizontal or vertical polarization

Ideal for long range 802.11B/G links

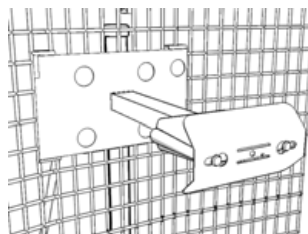
Mesh reflector blends easy with any environment

Specifications

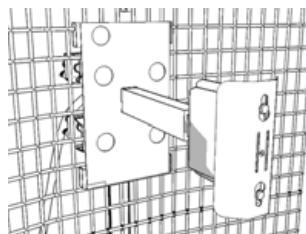
Frequency Range	2400 - 2500 MHz
Gain	22,5 dBi
VSWR	1.3 : 1 typical
Impedance	50 Ohm
Front/back ratio	32 dB
Connector	Type N-male
Polarization	Linear, Hor/Vert
Max. RF power	50 W
Max. wind load	216 km/u
Weight	4 kg
Dimension (mm)	76 cm x 76 cm
Mounting	Mounting hardware fits 25 – 50 mm mast tubes



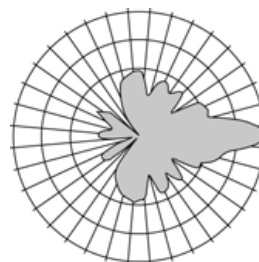
Tough pole mount included



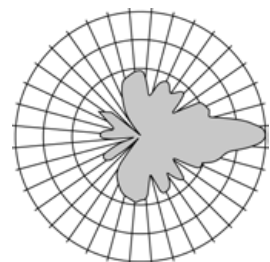
Horizontal polarized



Vertical polarized



*Horizontal polarized
azimuth pattern*



*Vertical polarized
azimuth pattern*

